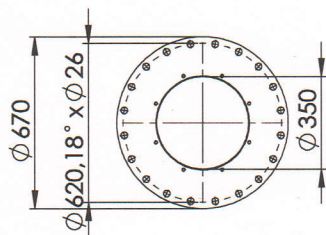
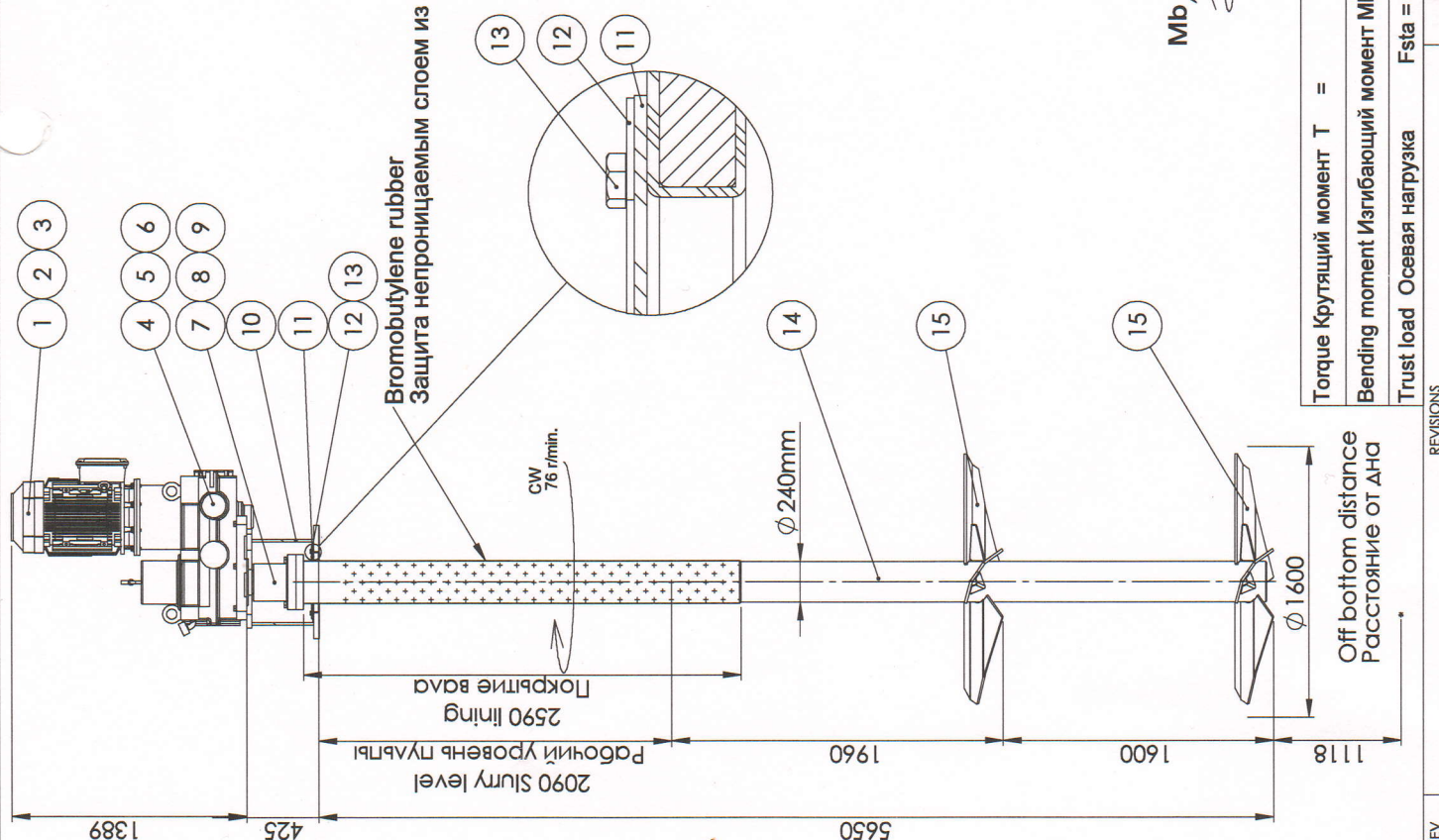



Монтажная плата



Розыгрыш

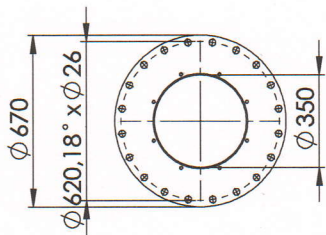


Pos. 1 Agitator for Attack tank 7 pc
Поз. 1 Перемешивающее устройство для реактора разложения поз.Р19/1

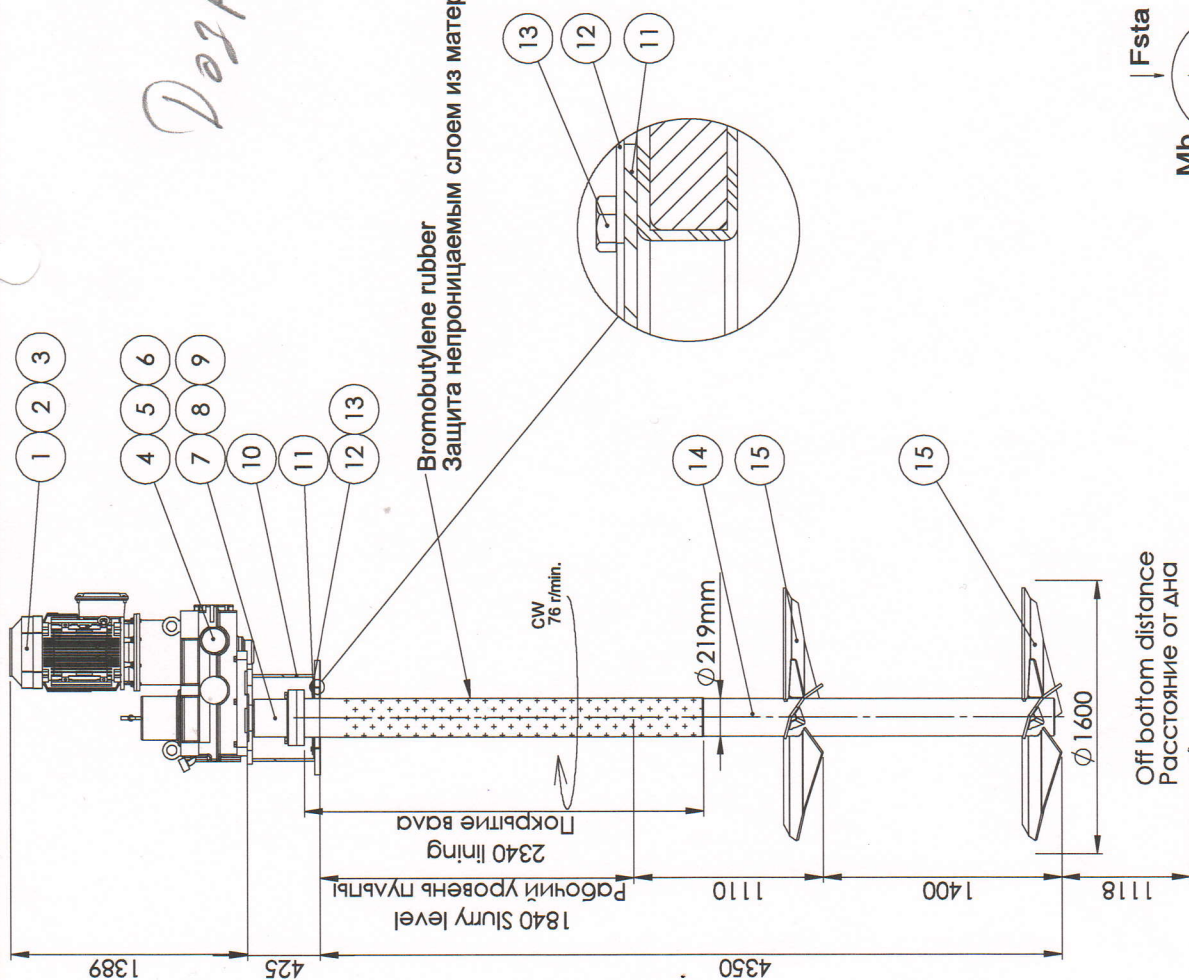
15	14P22453-4	Propeller Пропеллер ϕ 1600	EN 1.4410	2
14	14P22453-4	Shaft Вал	EN 1.4410	1
13		Screw Болт	M12x25 DIN 933	8
12	14P22453-3	Sealing plate	EN 1.4404	2
11	14P22453-2	Sealing уплотнение вала	Rubber	1
10	14P22453-1	Intermediate housing Проставок	S355J0/Rubber	1
9		Washer Шайба	M24 DIN 127	10
8		Screw Болт	M24x90 DIN 931	10
7	14P921-1	Coupling Муфта	EN-GJS-500	1
6		Washer Шайба	M20 DIN 127	6
5		Screw Болт	M20x90 DIN 931	6
4		Gear Реактор KUMERA Compact SGLM-2225 I=20:1	8.8 ZnK	1
3		Washer Шайба	M16 DIN 127	8
2		Screw Болт	M16x50 DIN 933	8
1		Motor Электродвигатель ABB 37kW 1500r/min, 380V/50Hz	8.8 ZnK	1
Part Drawing no		Part name	Shape, dim., model	Pcs
<p>It is weld size and dimensions haven't been given, weld size is atleast 6mm. Sharp corners are filleted R=0.1...0.5 if nothing else has been given.</p> <p>Unless otherwise specified these tolerances are valid.</p> <p>Metal cutting</p> <p>SFS-EN 22768-1 medium</p>				
Base dim.		Diff. dim.	Base dim.	Diff. dim.
<1, =		>	<1, =	>
0	±0.1	30	30	±0.1
0	±0.2	120	315	±0.2
0	±0.3	200	500	±0.3
30	±0.5	1000	2000	±0.5
120	±0.8	2000	4000	±0.8
315	±1.0	4000	8000	±1.0
1000	±1.2	8000	12000	±1.2
2000	±1.5	12000	20000	±1.5
4000	±2	20000		±2
8000	±3			±3
12000	±4			±4
16000	±5			±5
20000	±6			±6
 <p>LWTECHNIC DY MOTOR TIE 20070111 KUKA PUNK FINLAND TEL: +358-2-8468800 FAX: +358-2-8418855</p>				
SCALE 1:30 (x/y)		MASS 2150 kg	PROJECT / CUSTOMER Kazphosphate	DRAWN PL8 DATE 12.12.2014
DRAWING NO 14P22453			REPLACING	SIZE A3
POS.				CONNECTING TO
PSJE 37/76				

Torque Крутящий момент	T =	9300 Nm
Bending moment Изгибающий момент	Mb =	9900 Nm
Trust load Осьевая нагрузка	Fsta =	25,3kN
INS	DATE	RDAY

INTERMEDIATE HOUSING FLANGE
МОНТАЖНАЯ ПЛИТА

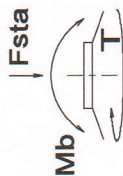


Дозревающие



Bromobutylene rubber
Защита непроницаемым слоем из материала Chemoline

Off bottom distance
Расстояние от дна



Torque Крутящий момент T =	9300 Nm
Bending moment Изгибающий момент Mb =	7900 Nm
Trust load Осевая нагрузка Fsta =	22,95 kN

REV REVISIONS DATE RDAV

Pos. 2 Agitator for Maturation tank 8 pcs
Поз. 2 Перемешивающее устройство для реактора дозревания поз.Р19/2

15	Propeller Пропеллер ϕ 1600	EN 1.4410	2
14	14P222456-4 Shaft Вал	EN 1.4410	1
13	Screw Болт M12x25 DIN 933	A4-80	8
12	14P222453-3 Sealing plate	EN 1.4404	2
11	14P222456-2 Sealing уплотнение вала	Rubber	1
10	14P222453-1 Intermediate housing Проставок	S355J0/Rubber	1
9	Washer Шайба M24 DIN 127	A4-60	10
8	Screw Болт M24x90 DIN 931	A4-80	10
7	14P921-1 Coupling Муфта	EN-GJS-500	1
6	Washer Шайба M20 DIN 127	8.6 ZnK	6
5	Screw Болт M20x90 DIN 931	8.8 ZnK	6
4	Gear Редуктор KUMERA Compact SGLM-2225 i=20:1		1
3	Washer Шайба M16 DIN 127	8.6 ZnK	8
2	Screw Болт M16x50 DIN 933	8.8 ZnK	8
1	Motor Электродвигатель ABB 37kW 1500r/min, 380V/50Hz		1
Part/Drawing no	Part name	Shape, dim., model	Material

If weld a- and s-dimensions hasn't been given, weld size is atleast 6mm. If dimensions are given, then base metal thickness shall be at least 6mm. If nothing else has been given, sharp corners are filled (R0,1 or 0,5 if nothing else has been given).

Unless otherwise specified these tolerances are valid.

Welded construction
SFS-EN 22788-1 medium

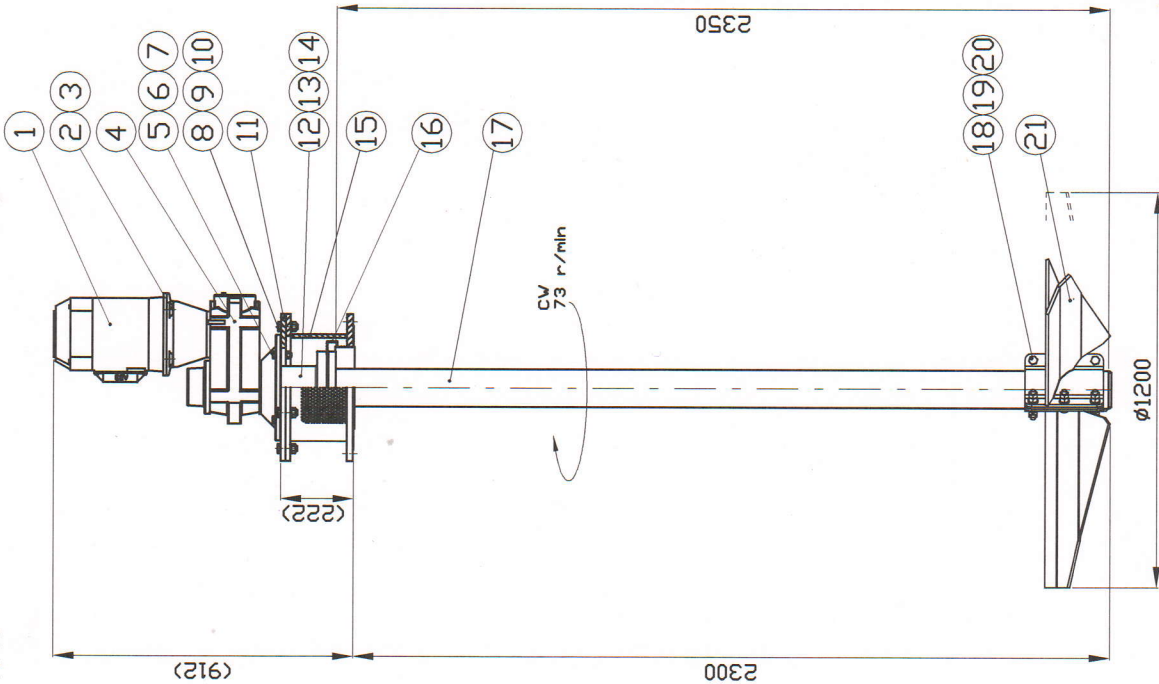
Base dim.	Diff. dim.	Base dim.	Diff. dim.
>	<=	>	<=
0	6	30	120
6	30	120	315
30	120	315	1000
120	315	1000	2000
315	1000	2000	4000
1000	2000	4000	8000
2000	4000	8000	12000
4000	8000	12000	16000
8000	12000	16000	20000
12000	16000	20000	20000
16000	20000	20000	20000



SCALE	MASS	PROJECT / CUSTOMER	REPLACING
1:30 (xx) (xx)	1950 kg	638/ Kazphosphate	
DRAWING NO			
14P222456			
POS.			

DRAWN	PL8
DATE	12.12.2014
SIZE	A3
CONNECTING TO	

PSJE 37/76

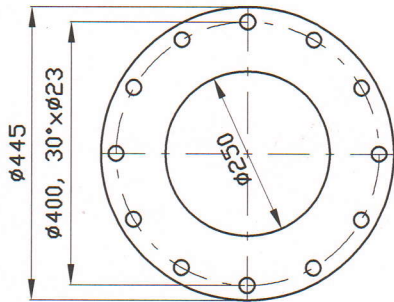


Torque Крутящий момент = 1050 Nm
Bending moment Изгибающий момент = 570 Nm
Thrust load Осевая нагрузка = 4,7 kN

CONFIDENTIAL КОНФИДЕНЦИАЛЬНО

REV	DATE	RDV
02		
01		

Assembly flange
МОНТАЖНАЯ ПЛАСТИНА



Мешалка для Емкости орошающей жидкости 29м³ 2 шт
П03, 24

Sharp edges rounded to R=0.1±0.5. Manufacturing tolerances valid if not indicated otherwise.

21	19P28411-4	Nut	M16 DIN934	A4-80	EN 1.4404	1
20		Nut	M16 DIN934	A4-80	EN 1.4404	1
19		Washer	M16 DIN125	A4-80	EN 1.4404	9
18		Screw	M16x60 DIN933	A4-80	EN 1.4404	9
17	19P28411-3	Shaft Вал			EN 1.4404	1
16	19P28411-2	Slinger ø280 /лабиринтовое уплотнение			EN 1.4404	1
15	19P28411-1	Intermediate housing Проставок			S355/EN 1.4404	1
14		Washer	M16 DIN127	A4-60	EN 1.4404	8
13		Screw	M16x60 DIN933	A4-80	EN 1.4404	8
12	14P040-1	Coupling Муфта			EN-GJS-500-7	1
11	19P28410-1	Adapter адаптер			S355	1
10		Nut	M16 DIN934	ZnK 8.8	EN 1.4404	8
9		Washer	M16 DIN127	ZnK 8.8	EN 1.4404	8
8		Screw	M16x40 DIN933	ZnK 8.8	EN 1.4404	8
7		Nut	M12 DIN934	ZnK 8.8	EN 1.4404	4
6		Washer	M12 DIN127	ZnK 8.8	EN 1.4404	4
5		Screw	M12x50 DIN931	ZnK 8.8	EN 1.4404	4
4		Gear KUNERA, SFG 2100 Редуктор			EN 1.4404	1
3		Washer	M12 DIN127	ZnK 8.8	EN 1.4404	4
2		Screw	M12x40 DIN933	ZnK 8.8	EN 1.4404	4
1		Motor ABB 4 kW, 1500 r/min, 380V/50 Hz, IP55, IE3 Электродвигатель			EN 1.4404	1

Part	Drawing no	Part name	Shape, dim., model	Material	Pcs
MANUFACTURING TOLERANCES					
Metal cutting SFS-EN 22768-1 medium					
Base dim.	Base dim.	Base dim.	Base dim.	Base dim.	Base dim.
>	>	>	>	>	>
0	0	0	0	0	0
1	1	1	1	1	1
2	2	2	2	2	2
3	3	3	3	3	3
4	4	4	4	4	4
5	5	5	5	5	5
6	6	6	6	6	6
7	7	7	7	7	7
8	8	8	8	8	8
9	9	9	9	9	9
10	10	10	10	10	10
11	11	11	11	11	11
12	12	12	12	12	12
13	13	13	13	13	13
14	14	14	14	14	14
15	15	15	15	15	15
16	16	16	16	16	16
17	17	17	17	17	17
18	18	18	18	18	18
19	19	19	19	19	19
20	20	20	20	20	20
21	21	21	21	21	21



WITECHNIE
INDUSTRIAL AGITATORS

WITECHNIE BY
WITECHNIE 2
WITECHNIE 3
WITECHNIE 4
WITECHNIE 5
WITECHNIE 6
WITECHNIE 7
WITECHNIE 8
WITECHNIE 9
WITECHNIE 10
WITECHNIE 11
WITECHNIE 12
WITECHNIE 13
WITECHNIE 14
WITECHNIE 15
WITECHNIE 16
WITECHNIE 17
WITECHNIE 18
WITECHNIE 19
WITECHNIE 20
WITECHNIE 21

Scale (390)

drawing no 19P28411

replacing

connecting to

PSJH 4/73